

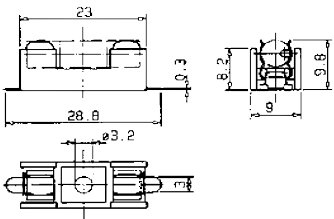
Type
199011



Type
199012



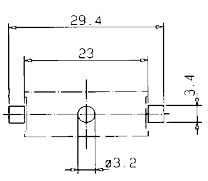
199011



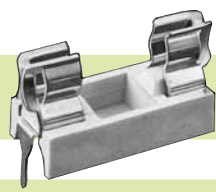
SMD-Sicherungshalter für G-Sicherungseinsätze 5 x 20 mm / Fuse-Holders (Fuse-Blocks) for miniature Fuse-Links 5 x 20 mm

Bemessungsspannung / rated voltage	AC 250 V / DC 300 V
Bemessungsstrom / rated current	6,3 A
Bemessungsleistung / rated power	1,6 W
Montage / mounting	Leiterplatte / printed circuit board Schrauben oder Nieten / screw or rivet
Anschlüsse / connections	lötbar / solderable

199012



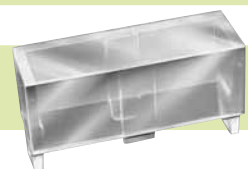
Type
199015



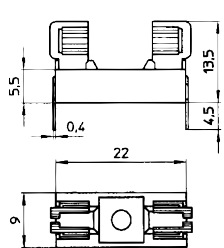
Type
199015A



Type
199016



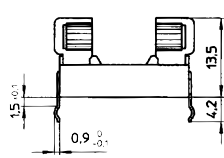
199015



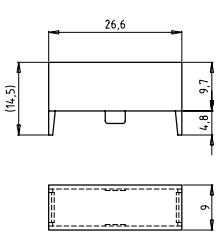
G-Sicherungshalter für G-Sicherungseinsätze 5 x 20 mm / Fuse-Holders (Fuse-Blocks) for miniature Fuse-Links 5 x 20 mm

Bemessungsspannung / rated voltage	250 V
Bemessungsstrom / rated current	6,3 A (VDE), 10A (UL)
Bemessungsleistung / rated power	1,6 W
Montage / mounting	Leiterplatte / printed circuit board
Stiftabstand / pin distance	22,5 mm
Bohrungen / hole	Ø 1,5 mm
Anschlüsse / connections	lötbar / solderable

199015A



199016



Abdeckung / cover 199016
Thermoplast, transparent / thermoplastic, transparent