

YF-T12 SERIES (PC Board Mounting Filters)



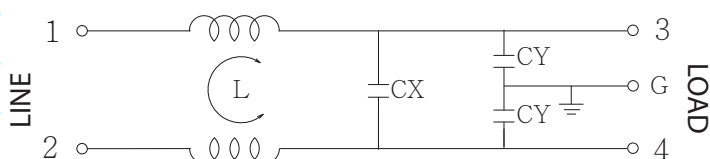
Features

- Direct PC Board mounting for easy installation and compact for space saving, the reliable plastic cover at low cost.
- The rated current can be offered from 0.5 to 10 amps.
- Low leakage current version upon requested.
- All parts are approved by UL, CE
- Applications comprising Household equipment , Medical equipment, Test and measurement equipment, datacom equipment, automation equipment
- Custom-specific versions are available on request.

Technical Specification

| | |
|------------------------------|------------|
| Rated voltage | 125/250VAC |
| Rated currents | Up to 10A |
| Operating frequency | 50/60Hz |
| Hipot rating(Line-to-line) | 1450VDC |
| Hipot rating(Line-to-ground) | 2250VDC |
| Operating temperature | -25~+85°C |
| Safety compliance | UL, CE |

Typical electrical schematic

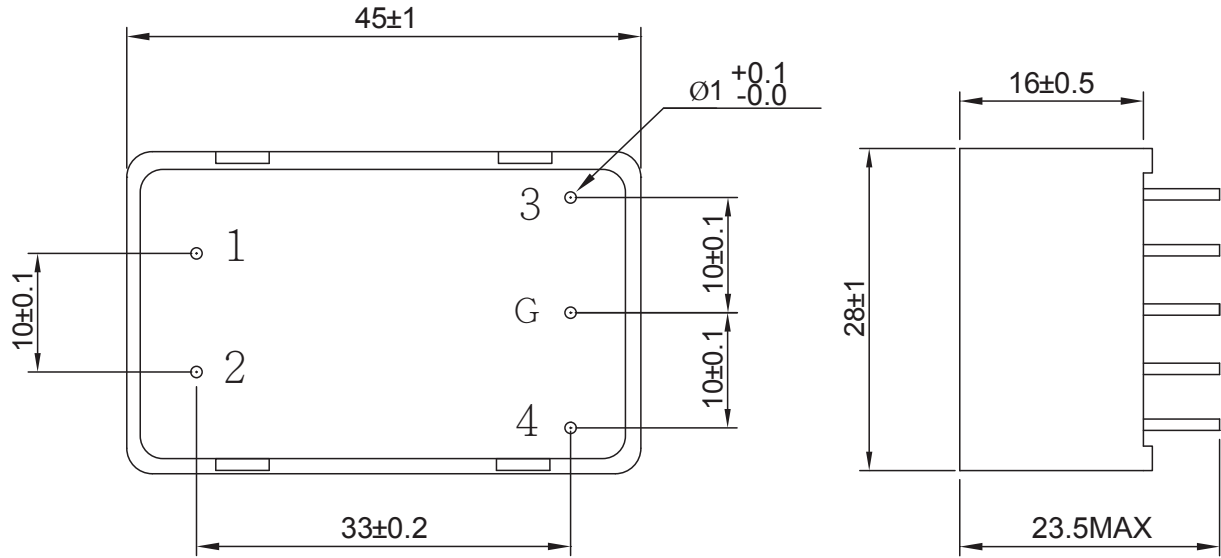


Filter Selection Table

| Part No. | Rated Current (A) | Inductance L(mH) | Capacitance CX(μF) | Capacitance CY(pF) | Output connections |
|----------|-------------------|------------------|--------------------|--------------------|--------------------|
| YF0R5T12 | 0.5 | 40 | 0.1 | 2500 | PCB terminal |
| YF1R5T12 | 1.5 | 6 | 0.1 | 2500 | |
| YF2R5T12 | 2.5 | 2 | 0.1 | 2500 | |
| YF6R5T12 | 6.5 | 1 | 0.1 | 2500 | |
| YF10T12 | 10 | 0.3 | 0.1 | 2500 | |

Physical Dimensions: (mm)

YF-T12



Typical filter attenuation (Common mode — Normal mode —)

