

Product title:	OLBC.FIL.2200K-130mm		
color:	Warm white	base:	FPC
chip:	InGaN/GaN	package:	Package box/foil bag
size:	135mm	Electric current:	IF=20mA



real photo:

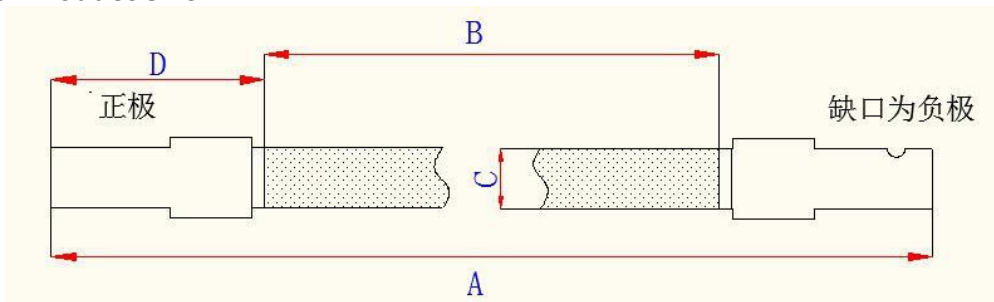
1. Product features:

- two sides dispensing, no blue overflow light, 360 degree light;
- soft, 360 degrees turn , bendable
- low power consumption, environmental-friendly, meet environmental standard of ROHS;
- CRI> 80, indoor lighting available

2. Product application:

Used for ball bulb candle lamp and so on

3. Product size:



remakes:

A=135mm, public errand \pm 1mm; B=120mm, public errand \pm 1mm;
 C=1.0mm, public errand \pm 0.1mm; D=7.4mm, public errand \pm 0.2mm.

4. Naming convention

OLBC.FIL.2200K-130mm

5. Maximum rating of the product (Ta=25°C)

parameter	symbol	maximum	unit
Maximum power	PM	2.6	W
Maximum current	IF	20	mA
Operating temperature range	Topr	-30°C~85°C	°C
Storage temperature range	Tstg	-40°C~100°C	°C
Anti static ability	ESD	2000 (HBM)	V

remakes: : It is recommended that the customer not use the maximum rating value, otherwise it will reduce the service life of the product.

6. Optical characteristics of products (Ta=25°C)

parameter	symbol	Minimum value	Typical value	Maximum value	unit	Test condition
Luminous flux	ϕ	200	--	230	lm	IF =20mA
Correlated color temperature	CCT	2100	2200	2300	K	IF =20mA
Forward voltage	VF	129	--	131	V	IF =20mA
CRI	Ra	82	83	84	--	IF =20mA

remakes:

- 1.luminous flux $\pm 5\%$.
2. CCT $\pm 80K$
3. Forward voltage $\pm 1V$
- 4.test by HAAS2000

7. BIN range

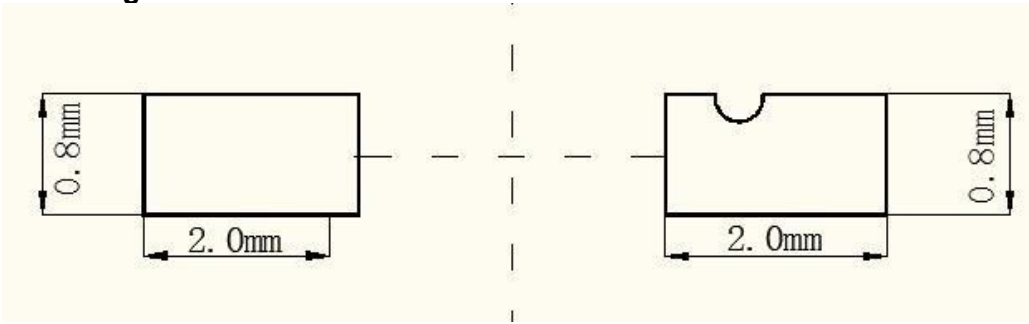
Forward voltage (errand $\pm 1V$ @ IF=20mA):

BIN	minimum(V)	Maximum(V)
R1	126	129
S1	129	132
T1	132	135

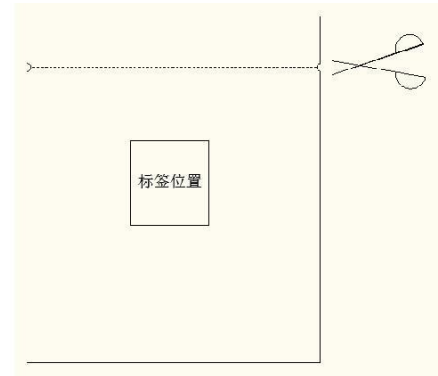
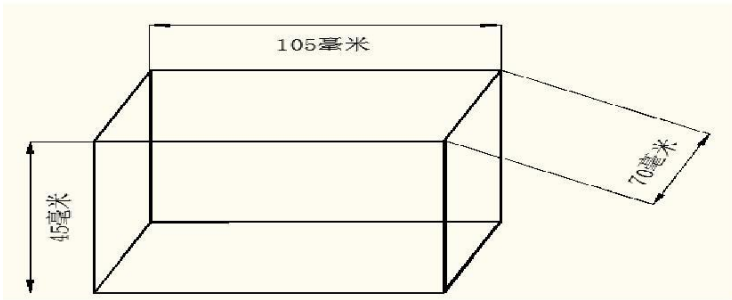
Luminous flux (errand $\pm 5\%$ @ IF=20mA):

BIN	minimum (lm)	Maximum (lm)
T1	190	200
U1	200	210
V1	210	220

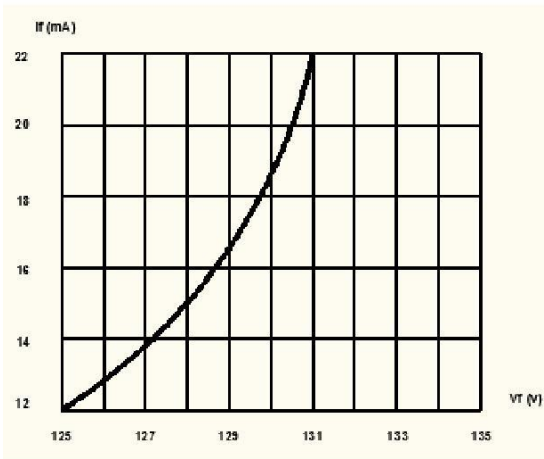
8. Welding size:



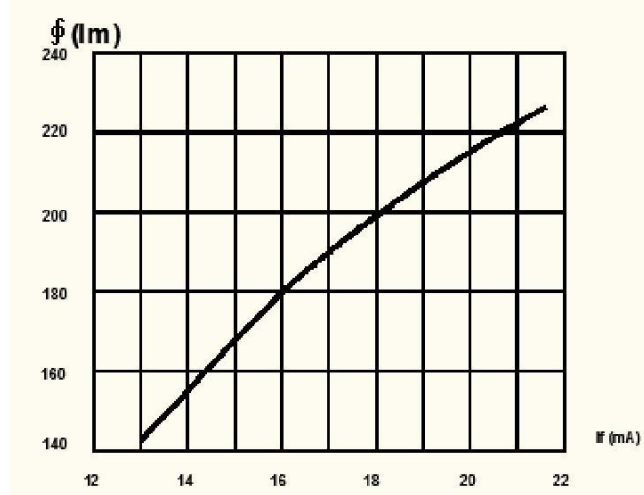
9. package: (200 pcs/box)



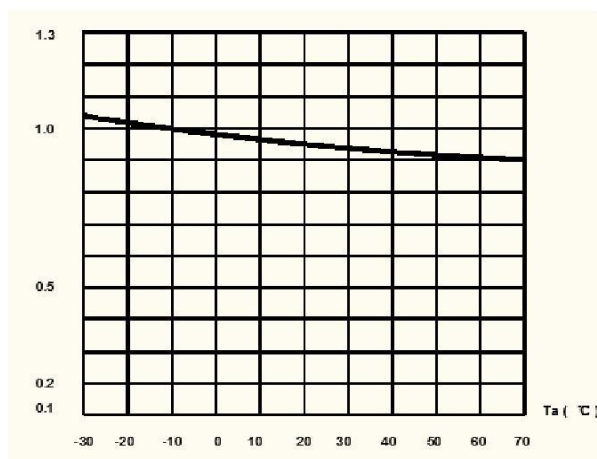
10. typical photoelectric characteristic curve



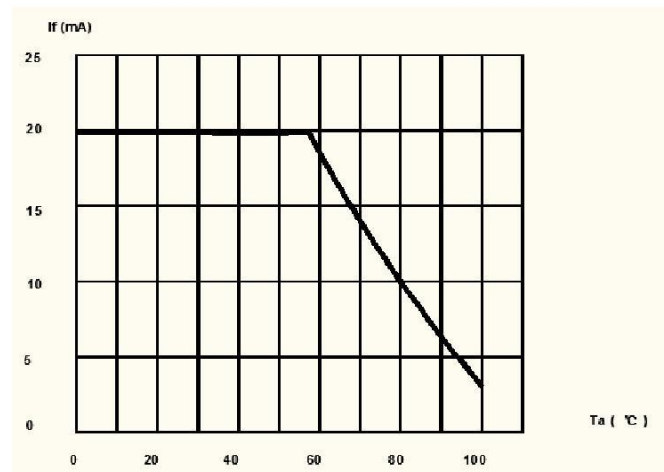
current and voltage curve



Luminous flux and current curve



Luminance and temperature curve



maximum Forward voltage and temperature curve

11. matters need attention

- **Package:**

LED Filament products are encapsulated by Silica gel,
Silica gel is easy to enter moisture in exposed air.
Heat expansion in high temperature causes product damage,
If the customer opened the package and did not use it within 48 hours, it must be sealed

- **Storage:**

LED soft filament products need to save in 5 ~ 30 degrees, humidity is less than or equal to 60% RH, vacuum packing case, save for a period of 6 months.

- **Application:**

- Try not to mix the products between different batches. The remaining small quantities can be used in combination with the next batch.
- Customers in the welding process can not pull products, in order to avoid bad results.

12. Company statement

The use of this product shall be according to the requirements of the specification in order to avoid additional losses.