



Starwire Lighting Co., Limited

Address: 5th Floor, 6th Building, Yushan Industrial Park, Shiyan Town, Bao'an District, Shenzhen City, GD, China

<http://www.starwire-led.com> Email: info@starwire-led.com Tel: +86-755-27609413 Fax: +86-755-27353407

Product specification

Product Name: WiFi Multi point Controller

Item No.: SW-RC-WiFi-v2-M



I. Product Summarize

1. Product constitute

NO.	Name	Instruction
1	WF200 Controller	It is the core of product, responsible for receive control signal and control LED equipment.
2	disk	Include IOS operating system and Android operating system mobile soft.
3	manual	Product use methods detailed instructions

2. Product summarize

LED-WiFi controller is following the traditional with infrared, RF technology controller foundation, it is birth of market and customer's demand, it is one type controller which integration the newest wifi technical in the market. It makes the LED control more convenience, more hommization. We can use an Android system or IOS system mobile phone to install control software, then it can control LED, this is the wishes of every customer.

Use WiFi technology can make our control range more wider, can get rid of narrow space constraint, in building can control more than 50m, in outdoor can control more than 100m.

II. Technical Parameters

1. Software technical parameters

- 1.Name: Magic Color 1.0
- 2.Runtime platform: Android version support Android system(better one can support Samsung, HTC), IOS version support IOS system, equipment must have WiFi function.
- 3.Language: English
- 4.Category: communications
- 5.Other: Free,,no plug-ins



2. Controller technical parameters

1. Working voltage: DC5--24V
2. Working temperature: -20-60°C
3. Power consumption: <1W (12V)
4. Output: : 3 channel (common anode), 4A/CH
5. Packing dimension: L215*W165*H55 (mm)
6. External dimension: L107*W65*H30 (mm)
7. Net weight: 276g
8. Gross weight: 320g
9. Receiving sensitivity: 802.11b DSSS(-5dBm) , 802.11b CCK (-10dBm) , 802.11g OFDM(-15dBm)

III. Dream Color 2.0 Instruction

1. Install Dream Color 2.0

First make sure your computer has been installed iTunes, if not Please download the latest version of iTunes, after complete the installation, in applications search "Dream Color 2.0", download and install.

2. Connect wifi controller

Connect wifi controller, open your phone connect wifi , please make sure the wifi SSID for connection is: " LN*** " (LN001-LN016)。



Choose the tip box set wifi



3.2.2

Complete setting if pop-up the following window: indicates the connection succeeds



3.2.3

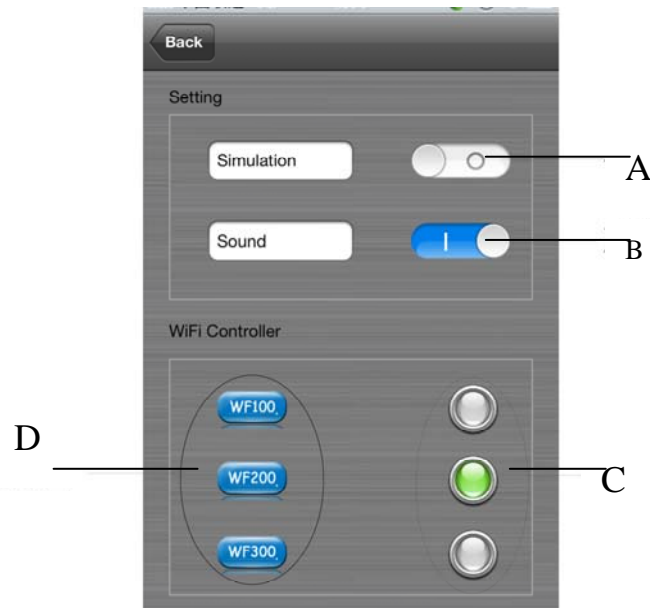
Otherwise the tip:



3.2.4

3.Connect wifi controller

Click on the SETUP button and enter SETUP interface, SETUP -> WiFi Controller -> WF200 -> RUN Mode (CD Mode, CT Mode, DIM Mode), Slave Controller (set corresponding address and the position of the slave controller).



3.2.1

A. The simulation switch

Open software into the simulation interface, there is no need to connect controller, convenient software demo. Closing into online control state.

B. Voice switch

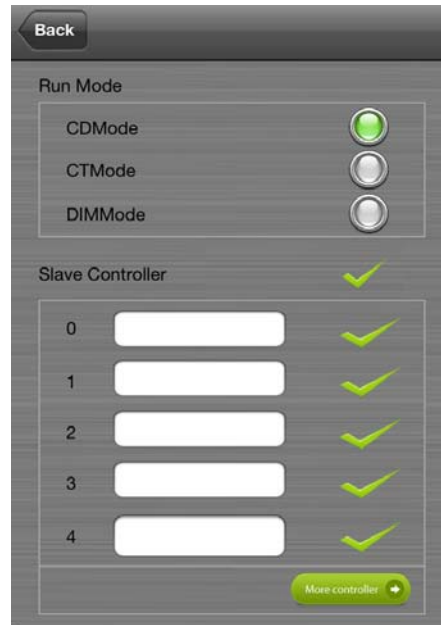
Open the close touch prompt.

C. Radio button

Choose current need to control equipment.

D. Set parameter

Click into WF200, the slave controller setting page:



Run Mode:

Choose current run mode. when slave controller connect RGB strip is choose "CD Mode", color

temperature strip is choose "CT Mode", single color strip is choose "DIM Mode" .

Slave Controller:

Slave Controller address and position parameter setting, Maximum support 16 points address.

4. Software operating



3.3.1



3.3.2

A. Site number

ALL: All sites synchronous control.

0-F: Slave controller site number, for the selected site control alone, other sites without control.

B. Site position

The current control sites' position (in the setup set site position).

C. ON/OFF key

ON/OFF, before control LED, open on/off key. After click OFF then close LED equipment

D. Color disk

Color dish function completely different in three modes: under CD mode is adjust color, under CT mode is adjust color temperature, under DIM mode is adjust brightness .

E. Mode key

Controller built-in mode switch.

F. Speed/brightness

Static mode adjust brightness, dynamic mode adjust the speed.

G. Color dish color value

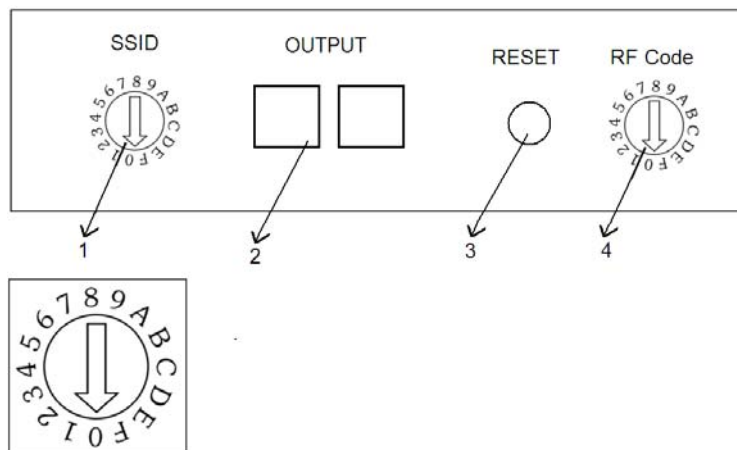
Show the current color value.

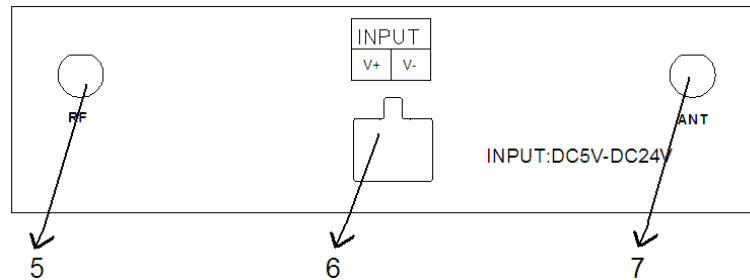
IV. LED-WiFi Controller Function Instruction

1. Working state instruction

Indicator light	Function table
Power	Power indicator light, long-time bright shows power supply normally
Wifi	Free time long-time bright, have wifi data enter flicker, configuration wifi Ssid off
Link	Receive the date, become flicker
Signal	Flashing When a master and slave communication

2. Connector instruction





1. Master controller SSID setting

Through dial code (SSID) to set LED-WiFi controller SSID number, corresponding table as above. Form 0 to 15, have 16 code in total, the corresponding SSID are below. That means use our product in same small area can set 16 mutual isolation LAN, once the dial code changed after switch was dialed, Ssid number immediately be modified, so you need to note that it need to search and connect again.

code	SSID
0	LN001
1	LN002
2	LN003
3	LN004
4	LN005
5	LN006
6	LN007
7	LN008
8	LN009
9	LN010
A	LN011
B	LN012
C	LN013
D	LN014
E	LN015
F	LN016

2. Master signal output end

Master controller signal output. If user don't use wireless control or distance is farther, the interface is synchronizing signal output.

1 2 3 4 5 6 7 8



Definition:

Number	Function
1	A (Data+)
2	B (Data-)
3	-
4	-
5	-
6	-
7	GND
8	GND

3. Master controller reset key

Recovery factory set. Restore the factory set password when press this button more than 10 seconds.

4. Setting master controller transt frequency

Through the Code switch (RF Code) to set LED-WiFi controller wireless transmitting frequency. When the near distance exists within several master controller, in order to make each subsystem not mutual interference, can fine-tune master transmute frequency, realize the subsystem isolation. The same system transmute frequency and receive frequency must be equal also is to dial the code of the same position, otherwise can't achieve synchronous control.

5. RF transmit antenna(433M).

6. Power input

Controller voltage range is DC5-24 V, more than working voltage may burn out controller.

7. ANT, WIFI signal reception.

V. Built-in mode form of controller

1.The mode form of RGB Control:

Mode number	function	remark
1	Static red	Brightness is adjustable, Speed is unadjustable
2	Static green	
3	Static blue	
4	Static yellow	
5	Static purple	



Starwire Lighting Co., Limited

Address: 5th Floor, 6th Building, Yushan Industrial Park, Shiyan Town, Bao'an District, Shenzhen City, GD, China

<http://www.starwire-led.com> Email: info@starwire-led.com Tel: +86-755-27609413 Fax: +86-755-27353407

6	Static cyan	
7	Static white	
8	Three-color jumpy changing	Speed and brightness are adjustable
9	Seven-color jumpy changing	Speed and brightness are adjustable
10	Three-color gradual changing	Speed and brightness are adjustable
11	Seven-color gradual changing	Speed and brightness are adjustable

2. The mode form of color temperature control:

Mode number	function	remark
1	CW	Brightness adjustable
2	80%CW	
3	60%CW	
4	40%CW	
5	20%CW	
6	PW(pure white)	
7	20%WW	
8	40%WW	
9	60%WW	
10	80%WW	
11	WW	

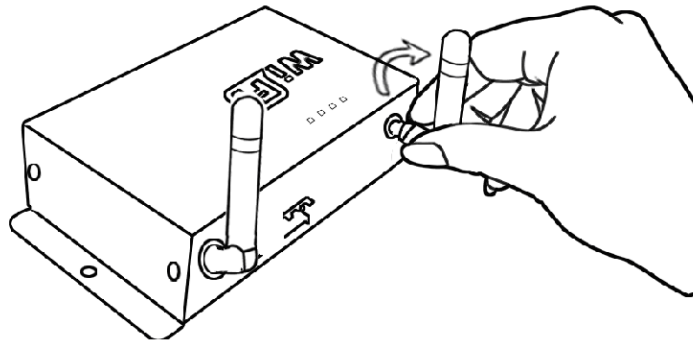
3. The mode form of dimming Control:

Mode number	function	remark
1	1%	Brightness proportion
2	10%	
3	20%	
4	30%	
5	40%	
6	50%	
7	60%	
8	70%	
9	80%	
10	90%	
11	100%	

VI. Explain installed hardware

1. Install ANT

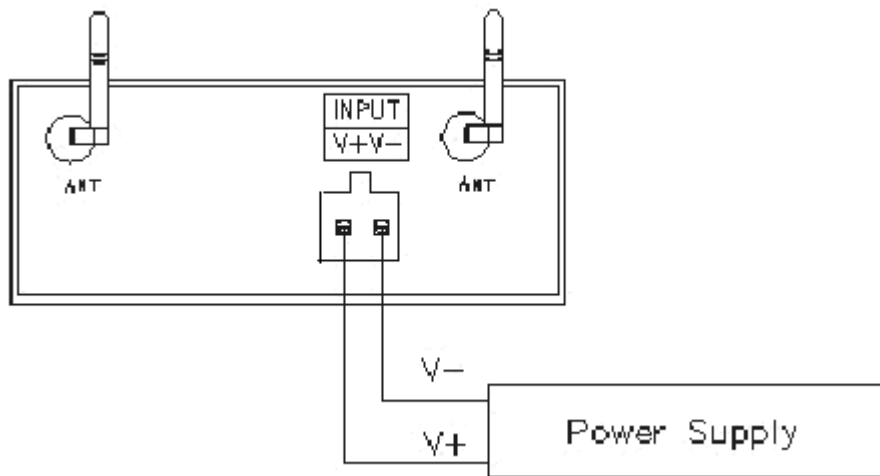
ANT's installation drawing:



clockwise install WIFI antenna and anticlockwise take down the antenna.

2. Install power supply

Controller adopt a wide voltage input DC5-24 V, easy to use.

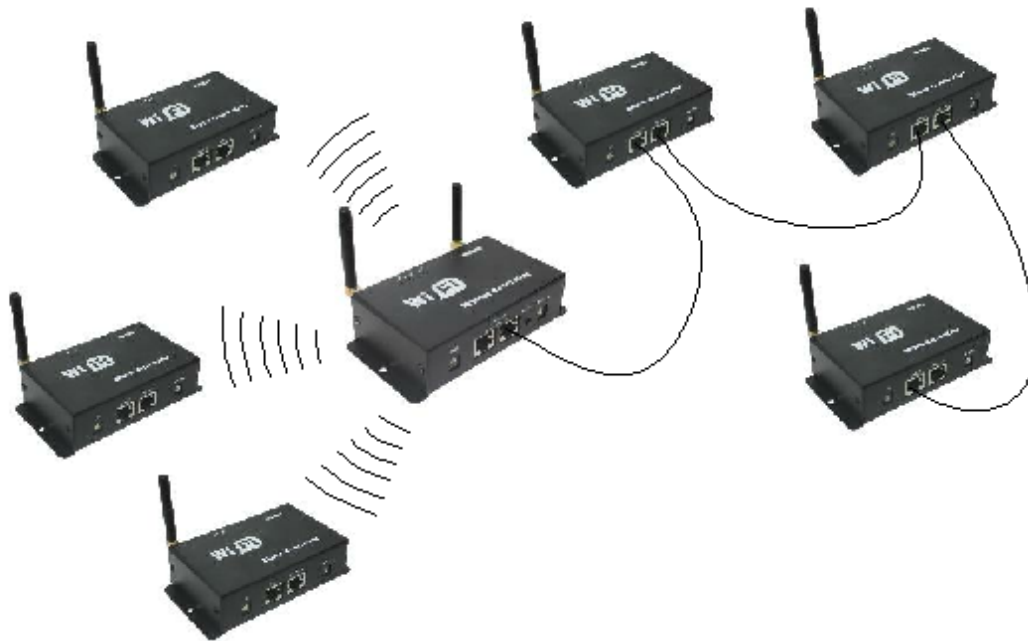


VII System application figure



Starwire Lighting Co., Limited

Address: 5th Floor, 6th Building, Yushan Industrial Park, Shiyao Town, Bao'an District, Shenzhen City, GD, China
<http://www.starwire-led.com> Email: info@starwire-led.com Tel: +86-755-27609413 Fax: +86-755-27353407



Notice: when use the wireless control, in order to achieve the best effect, the master should be placed in each slave control center position.