

Horn Speaker

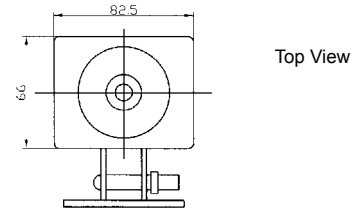
KPH-66S SERIES HORN SPEAKER

Model No	KPH-66S
Impedance	4/8/12 Ohm (at 1 KHz)
Voice Coil Dia.	Ø25.4mm
Magnet Size	60 x 32 x 10mm
Resonant Freq.	Fo. 1.5KHz±10%
Power Rating	15W RMS
Freq.Resp.	200~10000Hz
Min.S.P.L.	95dB(at 1m/1W/1KHz)
Operating Temp.	-20~+60 °C
Weight	360g±10g

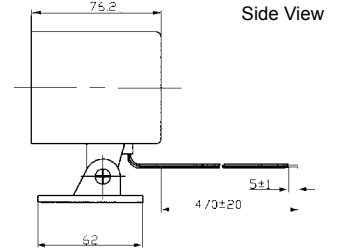


Color Black
ABS Housing Material
Lead Terminal

DIMENSIONS



Top View



Side View

all dimensions are in mm

* Value applying at rated voltage

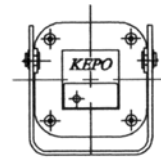
KPH-82G SERIES HORN SPEAKER

Model No	KPH-82G
Impedance	4/8/12 Ohm (at 1 KHz)
Voice Coil Dia.	Ø25.4mm
Magnet Size	60 x 32 x 10mm
Resonant Freq.	Fo. 1.5KHz±10%
Power Rating	15W RMS
Freq.Resp.	500~8000Hz
Min. S.P.L.	85±3dB(at 1m/1W/1KHz)
Operating Temp.	-20~+60 °C
Weight	370±10g

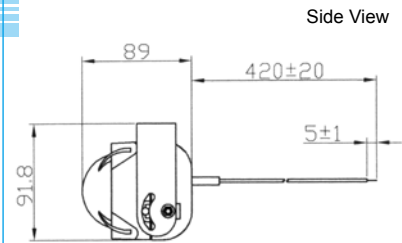


Color Black
ABS Housing Material
Lead Terminal

DIMENSIONS



Bottom View



Side View

all dimensions are in mm

* Value applying at rated voltage

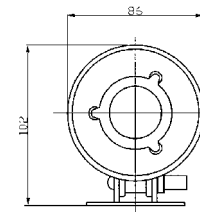
KPH-86T SERIES HORN SPEAKER

Model No	KPH-86T
Impedance	4/8/12 Ohm (at 1 KHz)
Voice Coil Dia.	Ø25.4mm
Magnet Size	60 x 32 x 10mm
Resonant Freq.	Fo. 1.5KHz±10%
Power Rating	15W RMS
Freq.Resp.	500~8000Hz
Min. S.P.L.	102±2dB(at 1m/2.83V/1KHz)
Operating Temp.	-20~+60 °C
Weight	360±10g

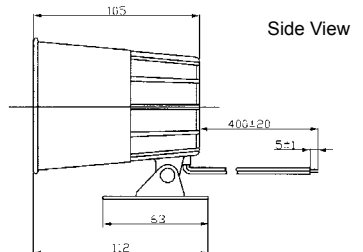


Color Black
ABS Housing Material
Lead Terminal

DIMENSIONS



Top View



Side View

all dimensions are in mm

* Value applying at rated voltage