

# LAS2GQ

## Metal Push Button



### Part-number Description

LAS2	GQ	★	□	■	◇	○	△	▲	◎	☆
<b>Code of series</b>	<b>The Front shape</b>	<b>Contact structure</b>	<b>Operation Type</b>	<b>Lamp Type</b>	<b>Illuminated type</b>	<b>Lamp color and colorized button</b>	<b>Lamp Voltage</b>	<b>Crust material</b>	<b>IP Rating</b>	
	F Flat Round H High Round C Concave round G High concave round PF Super Flat Head +Flat Button PH Super Flat Head +High Flat Button	11 1NO1NC 22 2NO2NC <b>No letter means signal lamp</b>	Z Latching No letter means Momentary	D Dot E Ring	T Power symbol No letter means standard type <b>Other symbol can be made to order</b>	R Red G Green Y Yellow O Orange B Blue W White	AC/DC 6V AC/DC 12V AC/DC 24V AC/DC 110V AC/DC 220V <b>Note: Other voltage can be made to order</b>	<b>N</b> Nickel-plated Brass <b>S</b> Stainless steel <b>A</b> Aluminium Alloy	FP IP67 No letter means IP40	

**Note:** Pls read the catalogue carefully, and choose the right part-number according to the sign.

### Specifications

<b>Operating Temperature</b>	-25°C~+55°C(no freezing) keep the air flowing around illuminated pushbutton
<b>Operating Humidity</b>	45~85%RH(no condensation)
<b>Contact Resistance</b>	≤50mΩ
<b>Insulation Resistance</b>	≥1000MΩ
<b>Dielectric Strength</b>	2000V,A C50Hz,5 seconds
<b>Vibration Resistance</b>	50Hz,Amplitude 1.2mm
<b>Shock Resistance</b>	> 10g
<b>Solder Heat Resistance</b>	320°C(or 30W soldering iron) no more than 2 seconds)

### Switch Rating

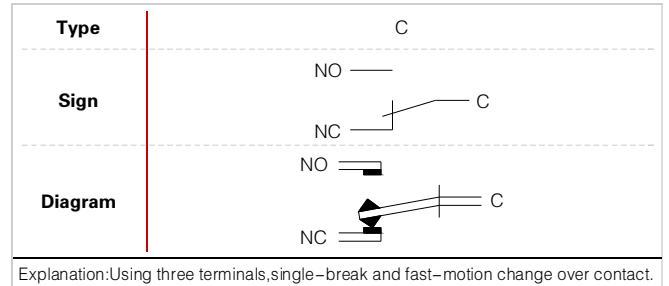
<b>Rated Insulation Voltage Ui</b>		250V				
<b>Thermal Current Ith</b>		3A				
<b>Rated voltage</b>		12V	24V	110V	220V	
<b>Rated Operation Current</b>	AC	Resistive load	—	—	1A	0.5A
	50/60Hz	Inductive load	—	—	0.7A	0.5A
	DC	Resistive load	1A	1A	0.2A	—
		Inductive load	0.7A	0.7A	0.1A	—
<b>Contact material</b>		Silver Alloy				

Minimum load: 3VAC/DC,5mA(Reference)  
Application scope depends on operating environment and load type

### Standard and Certification

<b>Standard</b>	<b>Certification Mark</b>	<b>Certificate Authority/Certification Number</b>
GB 14048.5-2008	CCC	CCC/2011010305485983
EN61058-1:2002+A2:2008	CE	VOV/VT11018805
EN60947-1:2004	CE	CTS/CTS070706-01006-E

### Switching Operation

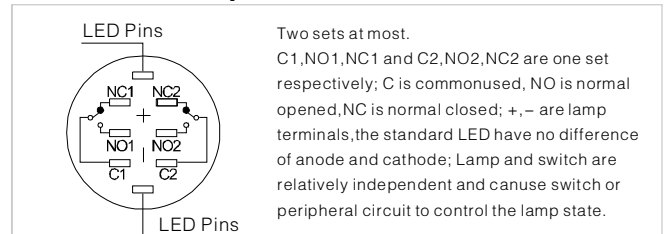


### Lamp Ratings

<b>Lamp Type</b>	LED lamp(AC/DC)
<b>Led Color</b>	R G Y O B W
<b>Life</b>	40000 hours ( Reference )
<b>Rated Voltage</b>	AC/DC6V,AC/DC12V,AC/DC24V,AC/DC36V,AC110V,AC250V
<b>Rated Current</b>	5~48V About 15mA; 110~250V About 2mA
<b>Dropping Way</b>	Inner resistance;Outer resistance when using 6V lamp.
<b>Lamp Circuit Diagram</b>	Using AC/DC LED lamp,the terminals have no difference of anode and cathode.Using inner resistance,do not need connect outer resistance. <b>Using 6V lamp when the lamp voltage is above 60V,and need connect outer droppingsistance.</b>

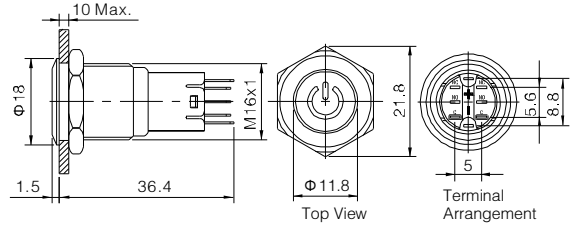
**Note:** DC LED and other voltage can be made to order.

### Terminal Description

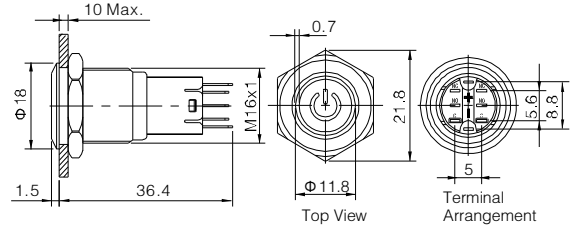




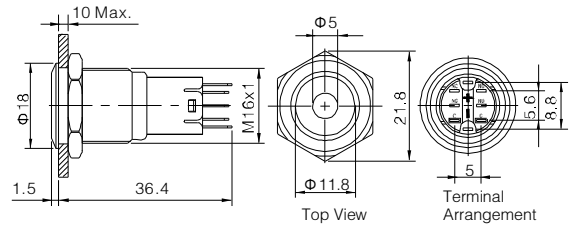
- ☉ If you need Indicator, The part number is: LAS2GQF-DT/△/▲/◎/☆
- ☉ Install diameter: Φ 16mm
- ☉ Switch Max Rating: Ith:3A, Ui:250V
- ☉ Button shape: Flat head
- ☉ Contact Configuration(□): 1NO1NC(11)/ 2NO2NC(22)
- ☉ Operation Type(■): Momentary / Latching(Z)
- ☉ LED Color(△): **R G Y O B W**
- ☉ LED Voltage(▲): 6V/12V/24V/110V/220V
- ☉ Crust material(◎): Stainless steel(S)/ Nickel plated brass(N)
- ☉ IP Rating(☆): IP40/IP67(FP),IK09



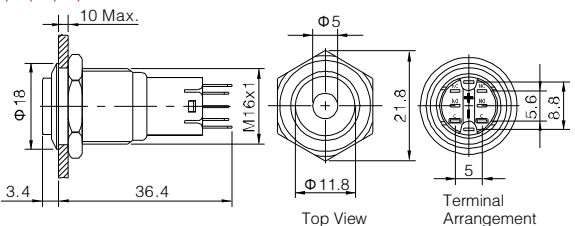
- ☉ If you need Indicator, The part number is: LAS2GQF-ET/△/▲/◎/☆
- ☉ Install diameter: Φ 16mm
- ☉ Switch Max Rating: Ith:3A, Ui:250V
- ☉ Button shape: Flat head Ring illuminated
- ☉ Contact Configuration(□): 1NO1NC(11)/ 2NO2NC(22)
- ☉ Operation Type(■): Momentary / Latching(Z)
- ☉ LED Color(△): **R G Y O B W**
- ☉ LED Voltage(▲): 6V/12V/24V/110V/220V
- ☉ Crust material(◎): Stainless steel(S)/ Nickel plated brass(N)
- ☉ IP Rating(☆): IP40/IP67(FP),IK09



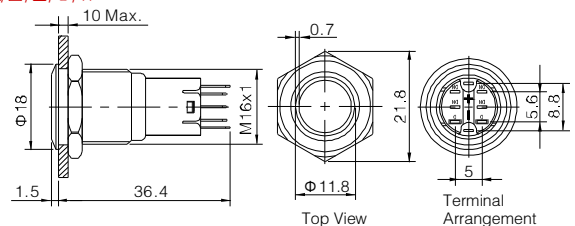
- ☉ If you need Indicator, The part number is: LAS2GQF-D/△/▲/◎/☆
- ☉ Install diameter: Φ 16mm
- ☉ Switch Max Rating: Ith:3A, Ui:250V
- ☉ Button shape: Flat head Dot illuminated
- ☉ Contact Configuration(□): 1NO1NC(11)/ 2NO2NC(22)
- ☉ Operation Type(■): Momentary / Latching(Z)
- ☉ LED Color(△): **R G Y O B W**
- ☉ LED Voltage(▲): 6V/12V/24V/110V/220V
- ☉ Crust material(◎): Stainless steel(S)/ Nickel plated brass(N)/Aluminium anodized(A)
- ☉ IP Rating(☆): IP40/IP67(FP),IK09



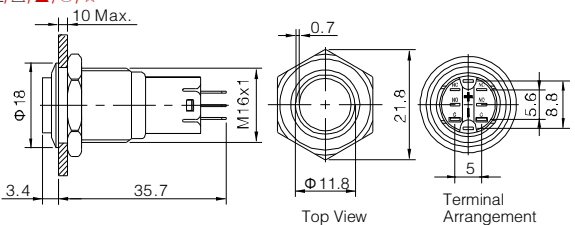
- ☉ If you need Indicator, The part number is: LAS2GQH-D/△/▲/◎/☆
- ☉ Install diameter: Φ 16mm
- ☉ Switch Max Rating: Ith:3A, Ui:250V
- ☉ Button shape: High Flat head Dot illuminated
- ☉ Contact Configuration(□): 1NO1NC(11)/ 2NO2NC(22)
- ☉ Operation Type(■): Momentary / Latching(Z)
- ☉ LED Color(△): **R G Y O B W**
- ☉ LED Voltage(▲): 6V/12V/24V/110V/220V
- ☉ Crust material(◎): Stainless steel(S)/ Nickel plated brass(N)/Aluminium anodized(A)
- ☉ IP Rating(☆): IP40/IP67(FP),IK09



- ☉ If you need Indicator, The part number is: LAS2GQF-E/△/▲/◎/☆
- ☉ Install diameter: Φ 16mm
- ☉ Switch Max Rating: Ith:3A, Ui:250V
- ☉ Button shape: Flat head Ring illuminated
- ☉ Contact Configuration(□): 1NO1NC(11)/ 2NO2NC(22)
- ☉ Operation Type(■): Momentary / Latching(Z)
- ☉ LED Color(△): **R G Y O B W**
- ☉ LED Voltage(▲): 6V/12V/24V/110V/220V
- ☉ Crust material(◎): Stainless steel(S)/ Nickel plated brass(N)/Aluminium anodized(A)
- ☉ IP Rating(☆): IP40/IP67(FP),IK09



- ☉ If you need Indicator, The part number is: LAS2GQH-E/△/▲/◎/☆
- ☉ Install diameter: Φ 16mm
- ☉ Switch Max Rating: Ith:3A, Ui:250V
- ☉ Button shape: High Flat head Ring illuminated
- ☉ Contact Configuration(□): 1NO1NC(11)/ 2NO2NC(22)
- ☉ Operation Type(■): Momentary / Latching(Z)
- ☉ LED Color(△): **R G Y O B W**
- ☉ LED Voltage(▲): 6V/12V/24V/110V/220V
- ☉ Crust material(◎): Stainless steel(S)/ Nickel plated brass(N)/Aluminium anodized(A)
- ☉ IP Rating(☆): IP40/IP67(FP),IK09



<b>LAS2GQF-□■DT/△/▲/◎/☆</b> <b>LAS2GQF-□■D/△/▲/◎/☆</b> <b>LAS2GQF-□■E/△/▲/◎/☆</b>		<b>LAS2GQF-□■ET/△/▲/◎/☆</b> <b>LAS2GQH-□■D/△/▲/◎/☆</b> <b>LAS2GQH-□■E/△/▲/◎/☆</b>		
<b>Terminal Type</b>	Pin Terminal(1.8x0.4mm)	<b>Material</b>	<b>Button</b>	StainlessSteel/Aluminium alloy (Black)
<b>Switching</b>	C(single-breakfast-motion changeover contact)		<b>Crust</b>	Stainless steel/Nickel plated Brass/ Aluminium alloy black anodized
<b>Panel Thickness</b>	1 ~ 10mm		<b>Base</b>	PBT
<b>Torque</b>	0.6Nm	<b>Operation Pressure</b>	2.5~4N	
<b>Mechanical Life</b>	200,000 cycles	<b>Operation Travel</b>	About 2.8mm	
<b>Electrical Life</b>	50,000 cycles	<b>RoHS</b>	Made to order	

