

Ceramic Resonator

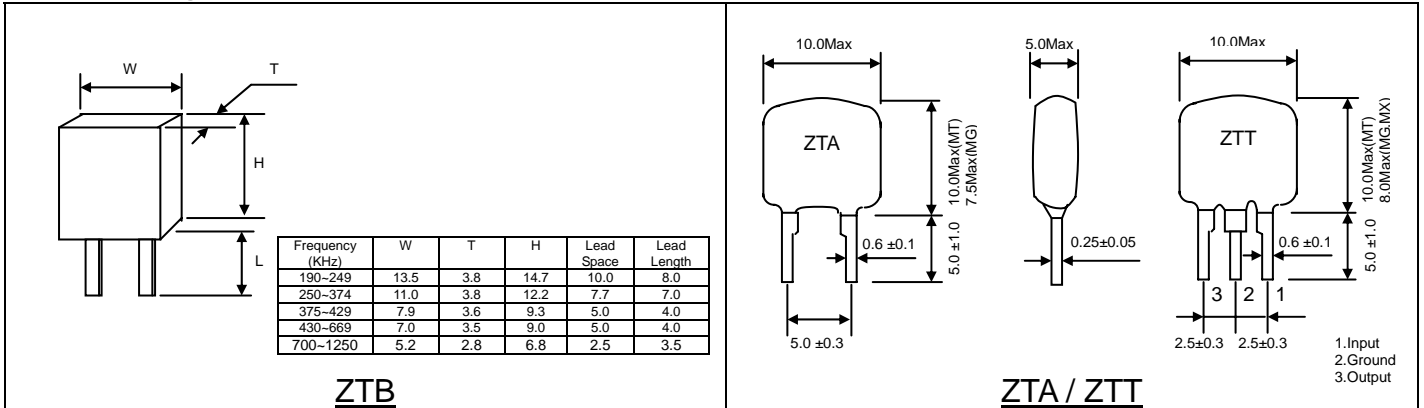
ZTB, ZTA, ZTT Case (Thru-hole)

Feature & Applications:

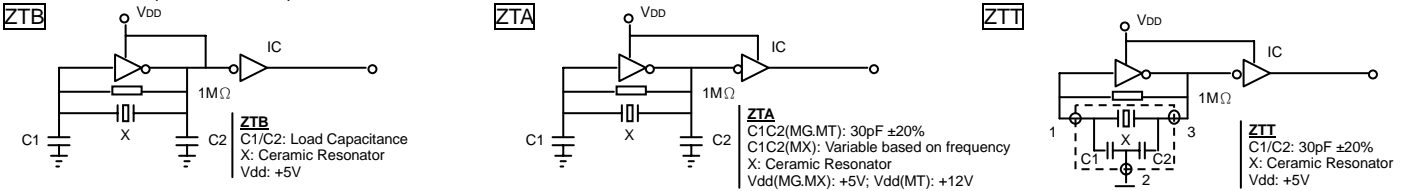
- Small Outline
- Low impedance
- Consumer Applications

Outline Drawing

Dimension (Unit:mm)



Test Circuit (For MOS IC)



General Characteristics

Part No.	Frequency Range	Frequency Tolerance	Stability -20~+80°C	Aging 10 years	Resonant Impedance	Load Cap (pF)	
						CL1	CL2
ZTB190-249 D	190 ~ 249 KHz	±0.3%	±0.3%	±0.5%	20Ω	330	470
ZTB250-374 D	250 ~ 374 KHz	±0.3%	±0.3%	±0.5%	20Ω	220	470
ZTB375-429 P	375 ~ 429 KHz	±0.5%	±0.3%	±0.5%	20Ω	120	470
ZTB430-509 Z	430 ~ 509 KHz	±0.5%	±0.3%	±0.5%	20Ω	100	100
ZTB510-699 E	510 ~ 699 KHz	±0.5%	±0.3%	±0.5%	35Ω	100	100
ZTB700-999 J	700 ~ 999 KHz	±0.5%	±0.3%	±0.5%	70Ω	100	100
ZTB1000-1250 MJ	1000 ~ 1250 KHz	±0.5%	±0.3%	±0.5%	100Ω	100	100
ZTA1.26-1.499 MK	1.26 ~ 1.499 MHz	±0.5%	±0.3%	±0.3%	150Ω	30	30
ZTA1.50-1.799 MK	1.50 ~ 1.799 MHz	±0.5%	±0.3%	±0.3%	100Ω	30	30
ZTA1.80-2.999 MG	1.80 ~ 2.999 MHz	±0.5%	±0.3%	±0.3%	80Ω	30	30
ZTA3.00-3.499 MG	3.00 ~ 3.499 MHz	±0.5%	±0.3%	±0.3%	50Ω	30	30
ZTA3.50-6.300 MG	3.50 ~ 6.300 MHz	±0.5%	±0.3%	±0.3%	30Ω	30	30
ZTA6.31-6.999 MT	6.31 ~ 6.999 MHz	±0.5%	±0.3%	±0.3%	30Ω	30	30
ZTA7.00-13.00 MT	7.00 ~ 13.00 MHz	±0.5%	±0.3%	±0.5%	25Ω	30	30
ZTA13.01-50.0 MX	13.01~50.0 MHz	±0.5%	±0.3%	±0.5%	40Ω	Based on frequency	
ZTT1.80-2.999 MG	1.80 ~ 2.999 MHz	±0.5%	±0.3%	±0.3%	80Ω	-	-
ZTT3.00-3.499 MG	3.00 ~ 3.499 MHz	±0.5%	±0.3%	±0.3%	50Ω	-	-
ZTT3.50-6.300 MG	3.50 ~ 6.300 MHz	±0.5%	±0.3%	±0.3%	30Ω	-	-
ZTT6.31-6.999 MT	6.31 ~ 6.999 MHz	±0.5%	±0.3%	±0.3%	30Ω	-	-
ZTT7.00-13.00 MT	7.00 ~ 13.00 MHz	±0.5%	±0.3%	±0.5%	25Ω	-	-
ZTT13.01-50.0 MX	13.01~50.0 MHz	±0.5%	±0.3%	±0.5%	40Ω	-	-

Part Number Guide:

ZTB - **455** - **E** - **05** - **N**
 Ceramic Resonator Frequency Range Tolerance Options
 Case Type 455 = 455KHz E = 510~699KHz 05 = ±0.5% LL60=Lead Length 6mm

Other combination is available