

**WTL P/N:WTL8H10858**  
**Crystal Oscillator**

---



<b>Customer</b>	WTL
	Approved by: Xoxo Lee
	<b>Checked by: Susan He</b>
	Issued by: Sheryl Xia

# **SPECIFICATION**

# WTL P/N:WTL8H10858

## Crystal Oscillator

### FEATURE

- All metal welded package
- Broad frequency range from 0.25Mhz to 180MHZ
- Built-in C-MOS IC with tri-state function
- 5V and 3.3V supply model available



### ELECTRICAL SPECIFICATIONS

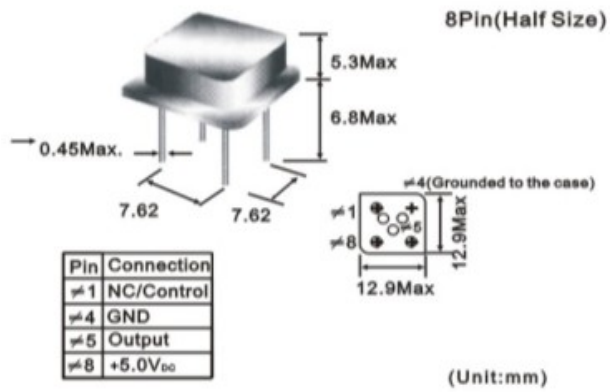
Model type		Half Size			
Fan Out Type		TTL/CMOS			
Supply Voltage		5V			
Frequency Range		4.000MHZ			
Operating Temperature		-20-70°C			
Frequency Range	0.25MHz~ 9.999MHz	15mA			
Input Current (Max)					
Frequency Tolerance	Frequency Stability	±50ppm			
Symmetry	AT 1/2 Vdd	45/55%			
Input Voltage	Vol(max)	0.4V/0.5V			
	2.4V/4.5V	3.0V			
Rise/Fall Time	AT 0.1Vdd~0.9Vdd	5ns max			
Driving Ability	CMOS load max	15pF			
	TTL load max	10TTL			
Start-up Time	Load RANGE	5 ms max(15pF)/ 10 ms (50pF)			
E/D Function	#1 OPEN	PIN #8 OPEN		#5 OPEN	
	#1 >=2.2V	PIN #8 OPEN		#5 OPEN	
	#1 <=0.8V	PIN #8 HIGHZ		#5 HIGHZ	
PAD Connection	PIN#1 E/D	PIN#8 OUT	PIN#1 E/D	PIN#5 OUT	
	PIN#7 GND	PIN#14 Vdd	PIN#4 GND	PIN#8 Vdd	

# WTL P/N:WTL8H10858

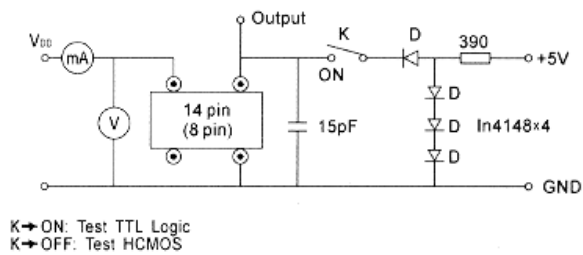
## Crystal Oscillator

### MARKING AND DIMENSIONS

#### HALF SIZE



### CIRCUIT PRINTCIPLE



### OUTPUT WAVE FORM

