

WTL P/N:WTL5L11970

SEAM SEALED OSCILLATOR 5X3.2MM SMD



FEATURE

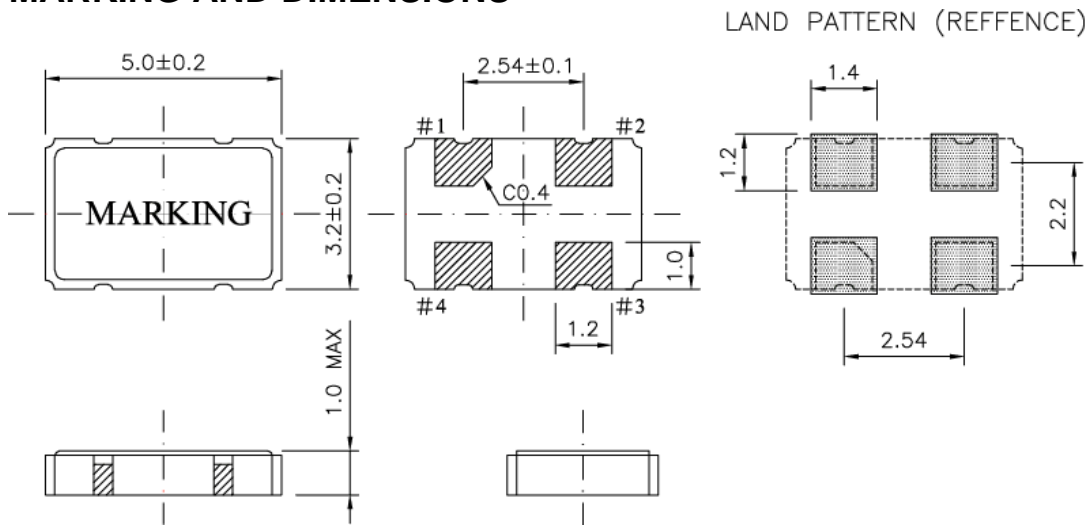
- Broad frequency range from 1.544Mhz to 125MHz
- Compact and thin ceramic package with metalized surface mounting and automatically loaded
- Reflow solder is possible
- Lower noise and current with reduced power consumption
- Built-in C-MOS IC with tri-state function
- 5V and 3.3V supply model available
- Ideally suited designed for use in PCs, NB, PCMCIA Cards, Palmtop Computer, Portable Applications



ELECTRICAL SPECIFICATIONS

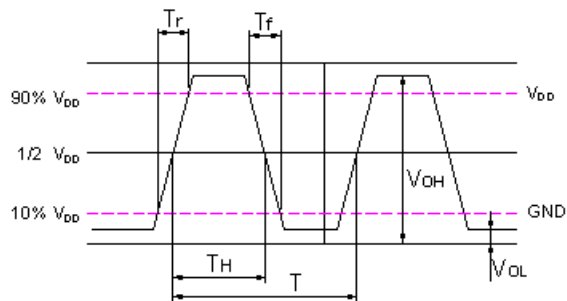
| Parameters | ConditionModel | Value |
|-----------------------|------------------|-----------------|
| Fan Out Type | | CMOS |
| Supply Voltage | | 3.3V |
| Frequency Range | | 14.7456MHz |
| Operating Temperature | | -10+70°C |
| Input Current | Frequency Range | 30mA max |
| Frequency Stability | All Conditions | ±50ppm |
| Symmetry | AT 1/2 Vdd | 45/55% |
| Output Voltage | Vol(max) | 0.33V |
| | VoH(min) | 2.97V |
| Rise/Fall Time | AT 0.1Vdd~0.9Vdd | 10ns max |
| Drive Ability | CMOS load max | 15pF |
| Start-up Time | Load RANGE | 10ms max(15pF) |
| E/D Function | #1 OPEN | PIN #3 ACTIVE |
| | #1 >=2.2V | PIN #3 ACTIVE |
| | #1 <=0.8V | PIN #3 INACTIVE |
| PAD Connection | PIN#1 E/D | PIN#3 OUT |
| | PIN#2 GND | PIN#4 Vdd |

WTL P/N:WTL5L11970
SEAM SEALED OSCILLATOR 5X3.2MM SMD
MARKING AND DIMENSIONS



- PIN NO CONNECTION**
 # 1 N.C.(INH)
 # 2 GND
 # 3 OUTPUT
 # 4 +VCC

WAVEFORM CONDITIONS



REFLOW CONDITION

