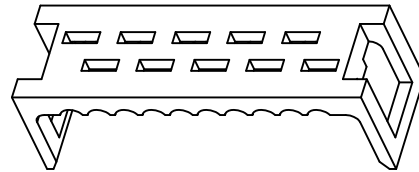
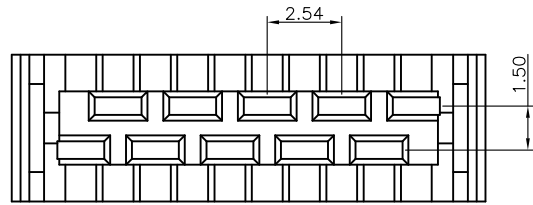
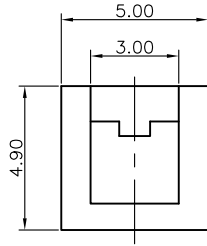
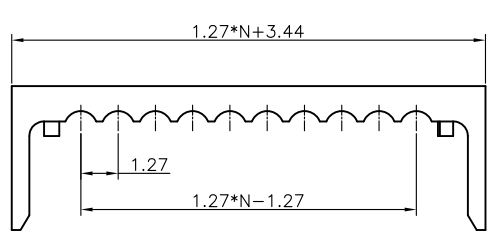


REV.	DESCRIPTION	DRAWN	CHECKED	APPROVED
A	NEW RELEASE	YCH 03/11/11'	~	



COVER

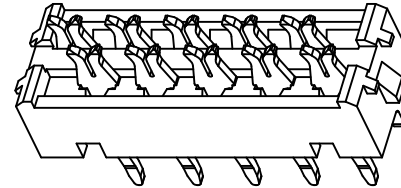
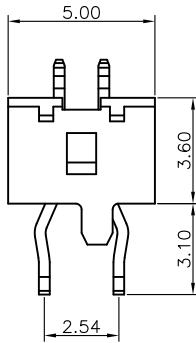
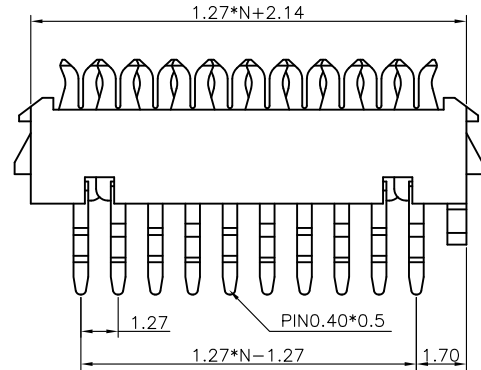
NOTES:

- MATERIAL
  - INSULATOR:THERMOPLASTIC(UL 94V-0).
  - CONTACT: COPPER ALLOY.
- SPECIFICATION
  - TEMPERATURE RANGE:-40°C~+105°C.
  - CONTACT RESISTANCE:30mΩ max.
  - INSULATION RESISTANCE:1000MΩ min.
  - DIELECTRIC WITHSTANDING VOLTAGE:AC 500V PER MINUTE.
- PRODUCT NUMBER CODE:  
DS1015-02- X X X

CONTACT PLATING  
2: NICKEL+GOLD FLASH  
6: FULL TIN  
8: FULL GOLD FLASH

HOUSING COLOR  
R:RED

No. OF CONTACTS  
04 06 08 10  
12 14 16 18  
20 24



HOUSING

GENERAL TOLERANCE		ANGLE TOLERANCE	
X.	±0.60	X.	±5°
.X	±0.38	.X	±3°
.XX	±0.25	.XX	±2°

PROJECTION	TITLE
UNITS	mm
SHEET SIZE	A4

TITLE	
MICRO MATCH PADDEL BOARD CONNECTOR	
SERIES	DS1015-02 SERIES

DRAWING TYPE	CUSTOMER		
SCALE	1:1	SHEET	1 OF 1
DRAWING NO.	C-DS1015-02-XXX		

晨翔电子有限公司  
**CONNFLY CONNFLY ELECTRONIC CO. LTD**