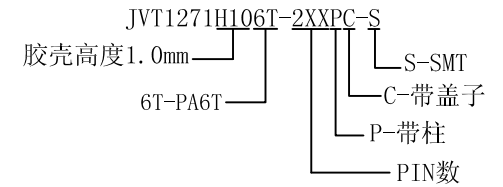
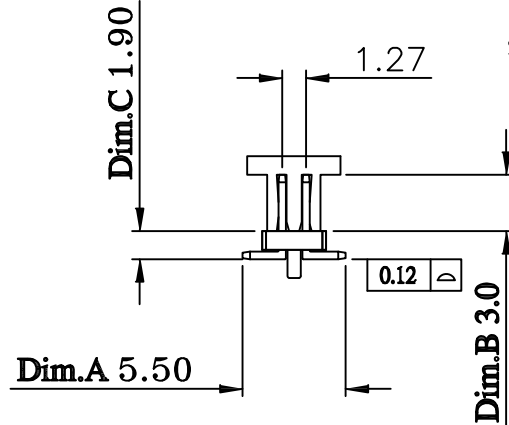
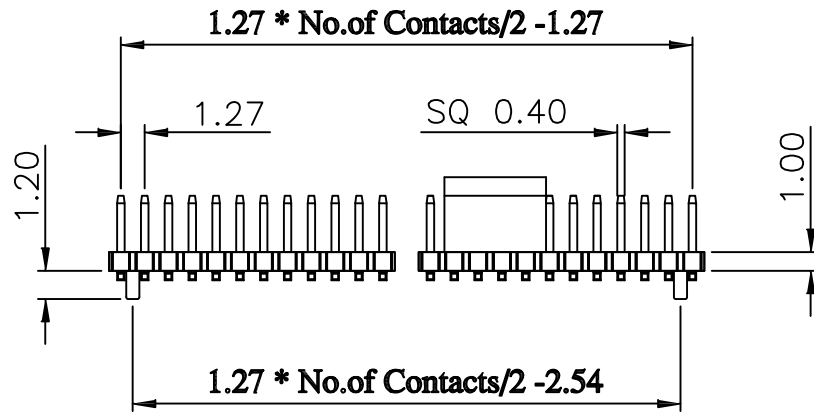


■ SPECIFICATION

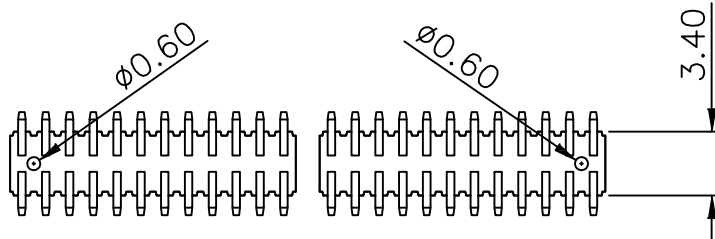
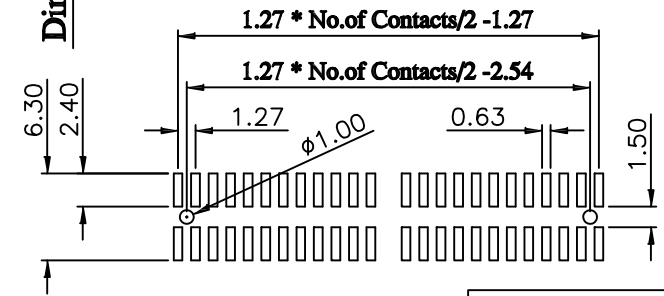
Current Rating: 1AMP.  
 Insulation Resistance: 1000MΩ MIN.  
 Contact Resistance: 20MΩ Max.  
 Dielectric Withstanding: 500VAC  
 Operation Temperature: -40°C~+85°C

MATERIALS:

Insulator Material: Polyester,UL 94V-0  
 Standard: Nylon-6T  
 Max Processing Temp: 230° C for 60 seconds  
 Max Processing Temp: 260° C for 10 seconds  
 Contact Material: Brass  
 Finish: Gold Plated or Duplex Plated  
 Standard: Gold Flash all over



Recommended P.C. Board  
 SMD Layout



GENERAL TOLERANCE	
0	±0.35
.0	±0.30
.00	±0.20
.000	±0.10

版本	变更内容	日期	单位	mm	比例	1:1	日期	20130521
----	------	----	----	----	----	-----	----	----------



核准	审核	绘图	品名	1.27排针H1.00 双排SMT 带柱带盖		
	BOLLY	CHEN	料号	JVT1271H106T-2XXPC-S		
			图名	004	版本	A