

REV.	DESCRIPTION	DRAWN	CHECKED	APPROVED
A	NEW RELEASE	LJC 05/08/05'	~	LJC 05/08/05'
B	整理图纸	YCH 07/19/08'	~	

NOTES:

- MATERIAL
 - INSULATOR: THERMOPLASTIC(UL 94V-0).
 - CONTACT MATERIAL: COPPER ALLOY.

2. SPECIFICATION

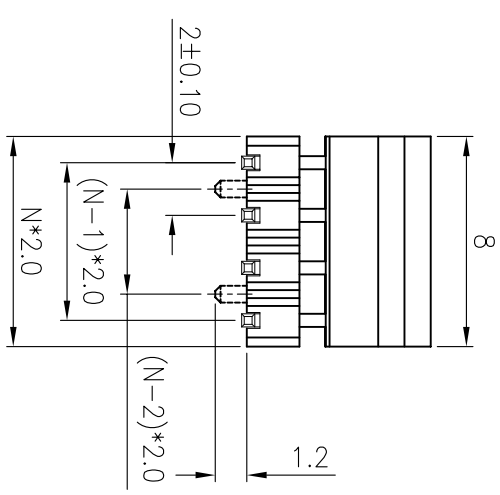
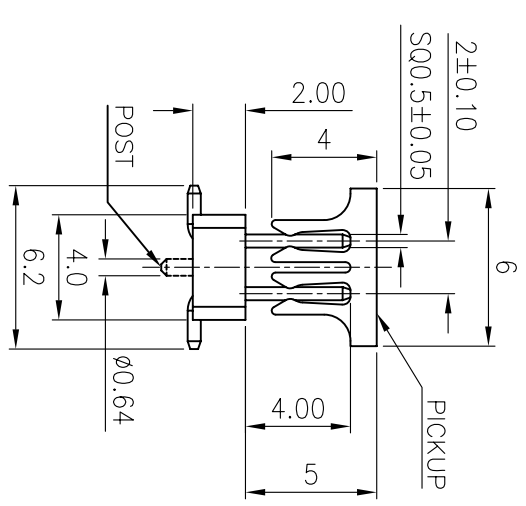
- CURRENT RATING: 1.5 Amp.
- INSULATION RESISTANCE: 1000MΩ Min.
- DIELECTRIC WITHSTANDING: 500VAC.
- CONTACT RESISTANCE: 20mΩ Max.
- OPERATING TEMPERATURE: -20°C TO +80°C.

3. PART NUMBER: DS1025-08

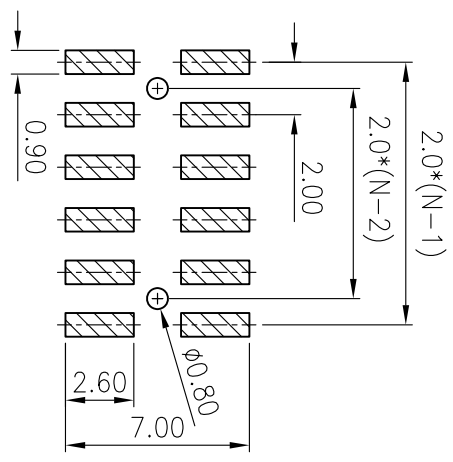
4. PRODUCT NUMBER CODE:

DS1025-08 - X X X X X X X X

- POST SUPPORT TYPE
- S: W/ POST
- X: W/O POST
- PACKING TYPE
- A: POLYBAG
- B: TUBE
- R: TAPE ON REEL
- T: TRAY
- PICKUP SUPPORT
- S: W/ PICKUP
- X: W/O PICKUP
- HOUSING COLOR
- B:BLACK
- CONTACT PLATING
- 8: FULL GOLD FLASH
- CONNECTOR TYPE
- P:PLUG
- No.OF CONTACTS
- 2*2-2*X
- SERIES No.
- DS1025-08



N=NUMBER OF CONTACTS/2



RECOMMEND PCB LAYOUT(TOLERANCE=±0.05)

GENERAL TOLERANCE	ANGLE TOLERANCE
X. ±0.60	X. ±5°
.X ±0.38	.X ±3°
.XX ±0.25	.XX ±2°

DRAWING TYPE	CUSTOMER
SCALE	1:1
DRAWING NO.	C-DS1025-08-XXXXXX-B

PROJECTION	TITLE
UNITS	2.0 PITCH PIN HEADER SMT TYPE
SHEET SIZE	DUAL ROW W/O LOCATE PEG
SERIES	DS1025-08 SERIES

晨翔电子有限公司
CONNFLY CONNFLY ELECTRONIC CO. LTD