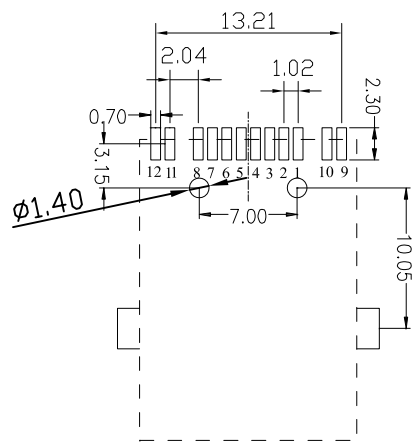
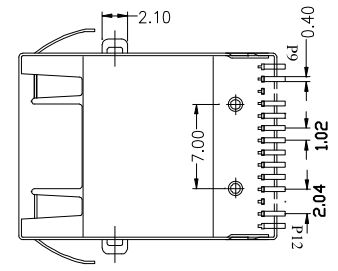
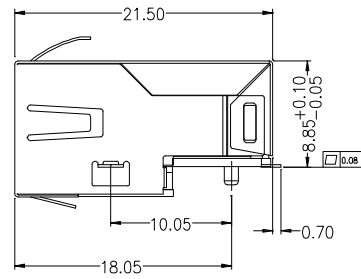
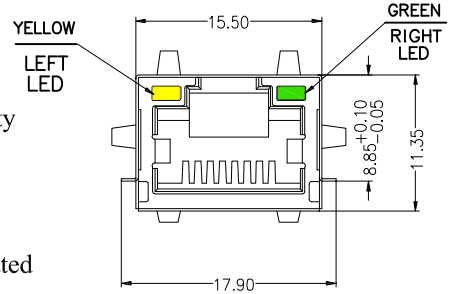


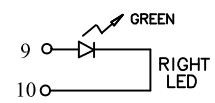
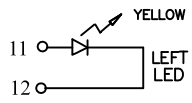
REVISION RECORD				
REV	ECO	DESCRIPTION	DRFT	CHKD
△		原始版本	PENGZ	09.06.09

Feature:

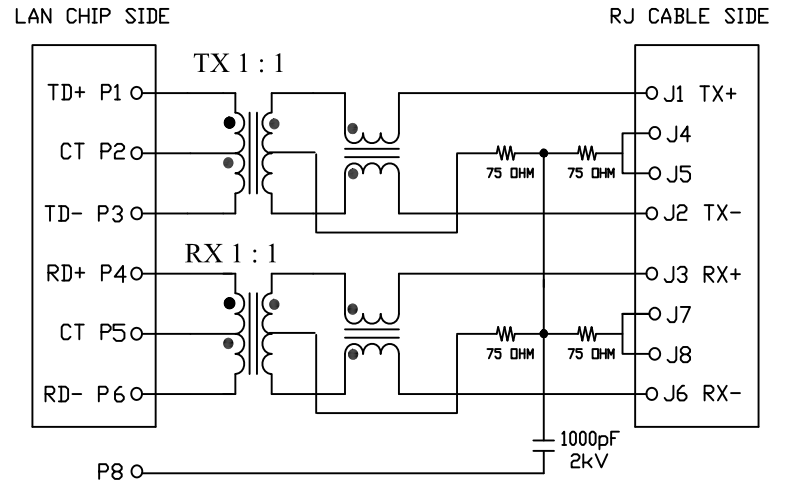
- . Complies with IEEE standards and all Gigabit specifications including 350uH with 8mA DC bias
- . Intergrated Mag-modular design provides higher reliability and conserves minimizing PCB space
- . Housing: Thermoplastic LCP UL94V0 rated
- . Contact :Phosphor Bronze C5191,Thickness=0.30mm plated Nickel 50u" Min, Gold plated on content area 6u" Min
- . Input Terminal : Phosphor Bronze C5191,T=0.25mm Finish : 120m' min Tin over 50m' min Nickel
- . Metal shielding: Copper alloy with Nickel plated(C2680), Thickness=0.20mm Ni 30u" Min
- . Different color of LEDs option available
- . Operating temperature: -40°C to +85°C
- . Storage temperature: -55 °C to +125°C



Suggested PCB Layout(Component side view)



SCHEMATIC



Electrical Specifications: (25°C)

1. Turns Ratio: @50KHz,0.1V: 1 : 1 ±2%	4. Common Mode Rejection: @1~100MHz: -35dB Min
2. Insertion Loss: @1~100MHz : -1.0dB Max	5. Crosstalk: @1~100MHz : -35dB Min
3. Return Loss: @1~30MHz : -18dB Min @30~45MHz : -16dB Min @ 45~60MHz : -14dB Min @ 60~80MHz : -12dB Min	6. OCL: @100KHz, 0.1V 8mADC : 350uH Min
	7. Hi-Pot : 2250V DC, 1mA, 60Sec

Lead-free process,compliant RoHS

DETACHED LISTS	设计: TOM 日期 09.06.09	LINK-PP 连普国际科技有限公司 LINK-PP INT'L TECHNOLOGY Co.,LIMITED	系列	名称	RJ45 Connector	
	一般公差栏					审核: JACK 日期 09.06.09
	INCH .0 ± .000	MM .0 ± 0.38 .00 ± 0.25 .000 ± 0.13	批准: LEO 日期 09.06.09	材料:	型号: LPJ19911ADNL	A4 版本
	角度 ± 1.5°	数量:	表面处理:	比例: 1:1	不按比例	共 1 页 第 1 页