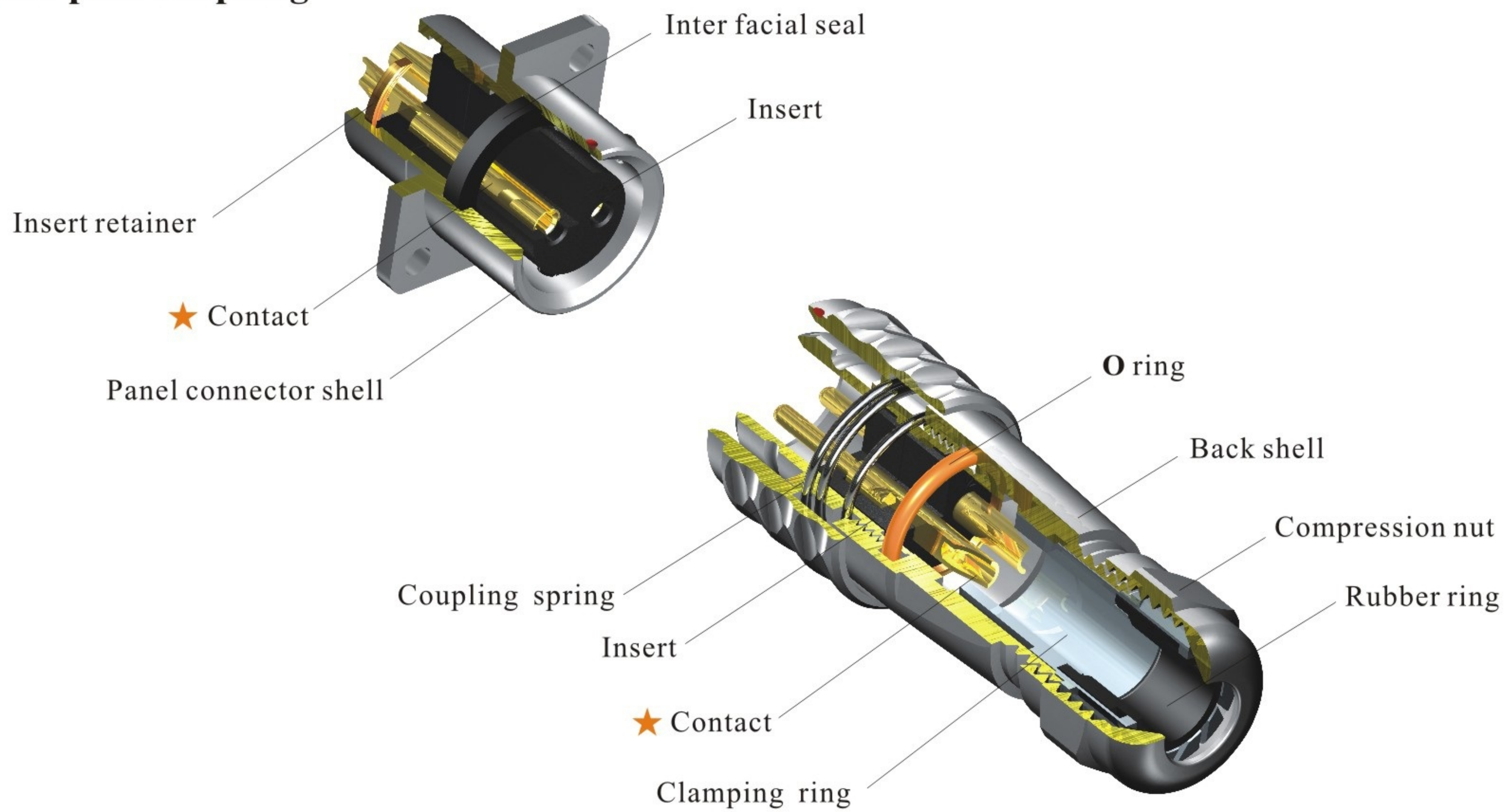


IP67



- SF Series IP67
- Push-pull coupling



★ Each side can be male or female contact

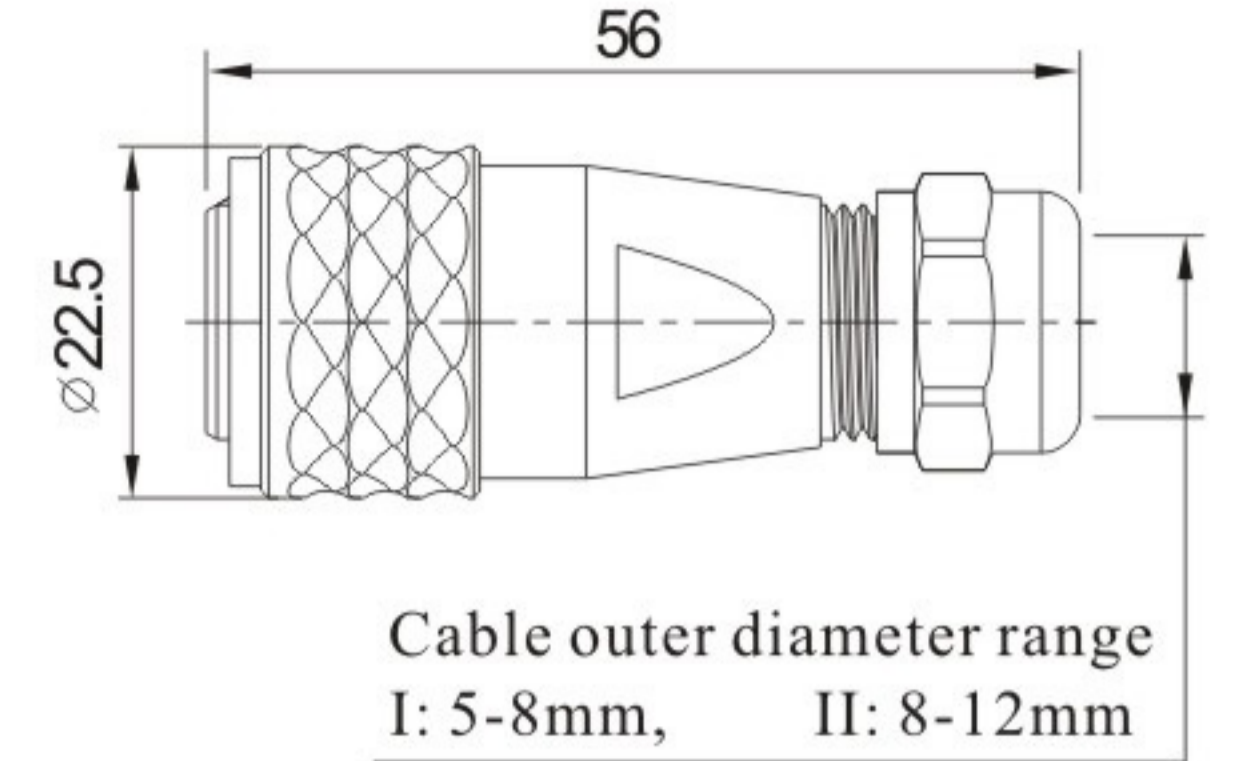
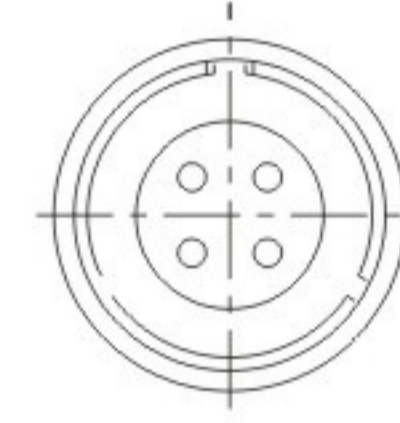
Material and spec

Coupling	Push-pull
Shell material	Brass with chrome plating
Insert material	PPS, max temperature 260 °C
Contact material	Brass with gold plating
Termination	Solder: SF6, SF8, SF10, SF12, SF16, SF20 Crimp: SF16, SF20 Screw: SF20 (∅ 2.5mm contact)
IP rating	IP67
Mating cycle	500
Temperature range	-40°C~+85°C
Insulation resistance (MΩ)	2000

SF16 Series



Cable connector
Mate with SF1611, SF1612, SF1613



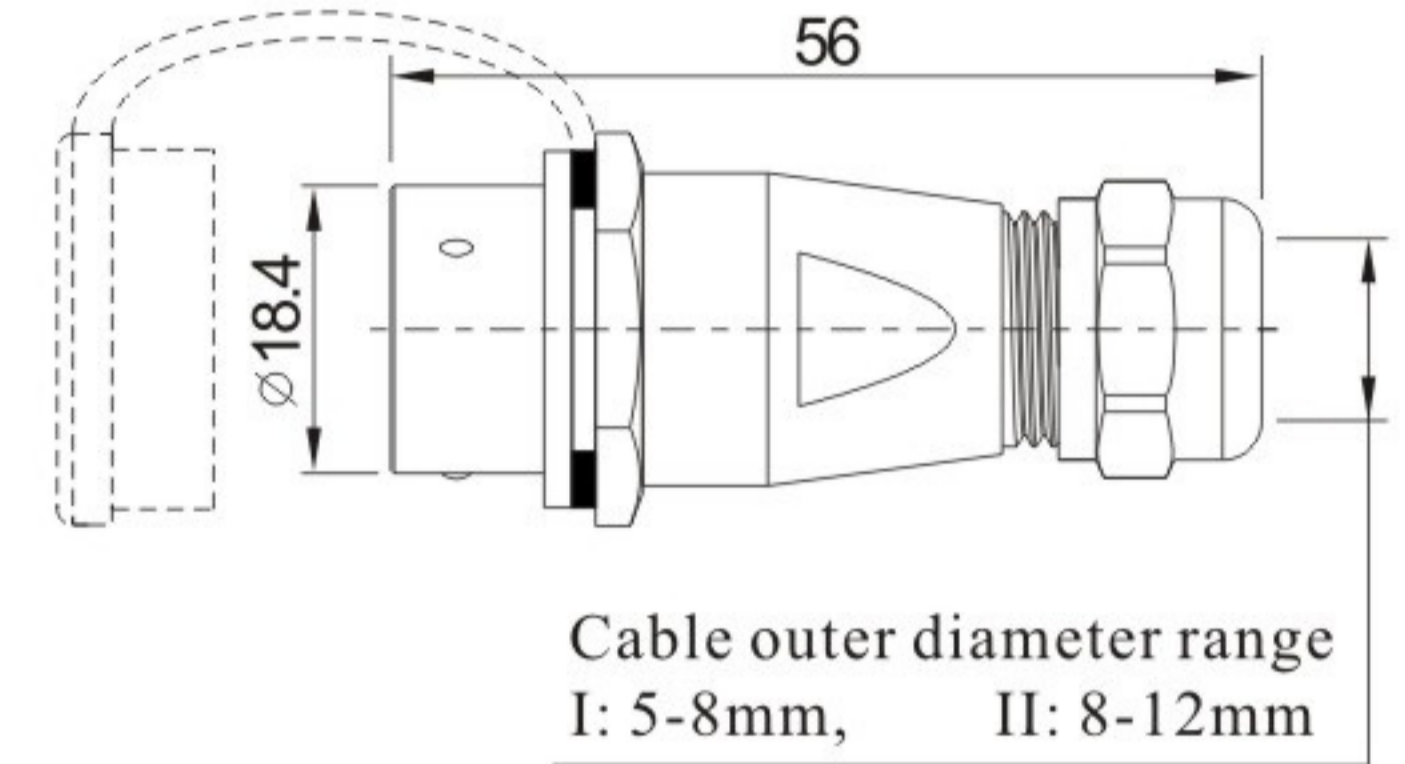
SF1610 / P ___ **SF1610 / S** ___
Number of contact

1: solder, 3: crimp
Cable outer diameter
I: 5-8mm, II: 8-12mm

Cable outer diameter range
I: 5-8mm, II: 8-12mm



In-line cable connector
Mate with SF1610

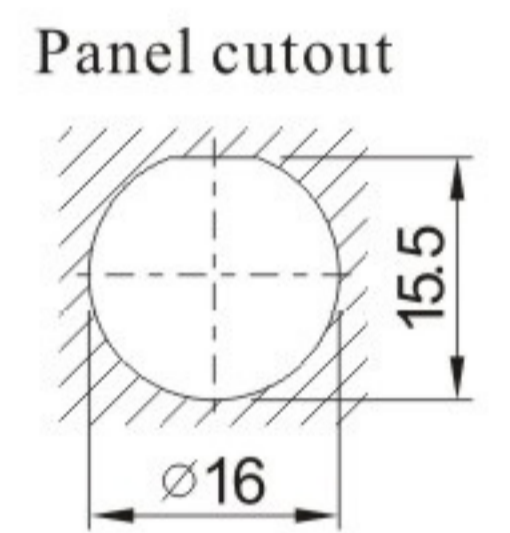
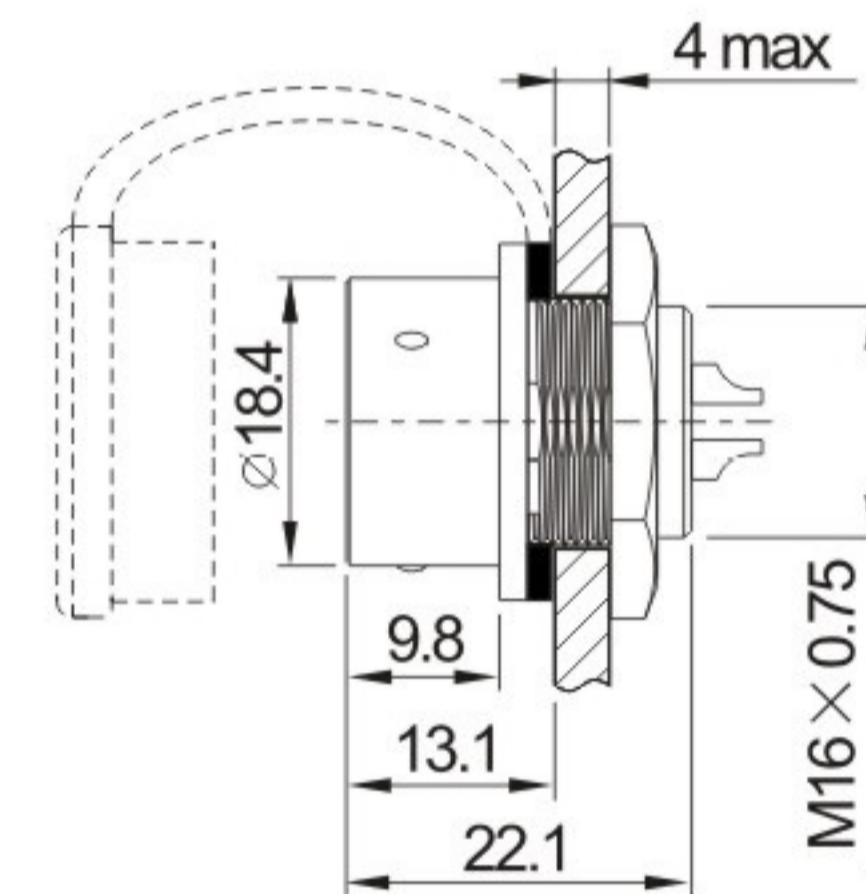


SF1611 / P ___ **SF1611 / S** ___

Cable outer diameter range
I: 5-8mm, II: 8-12mm



Rear-nut mount
Mate with SF1610

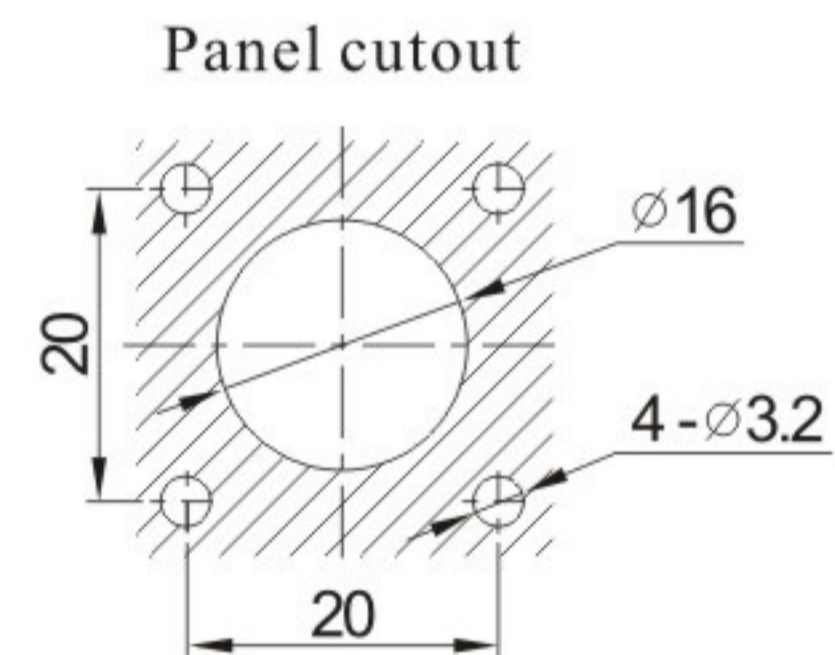
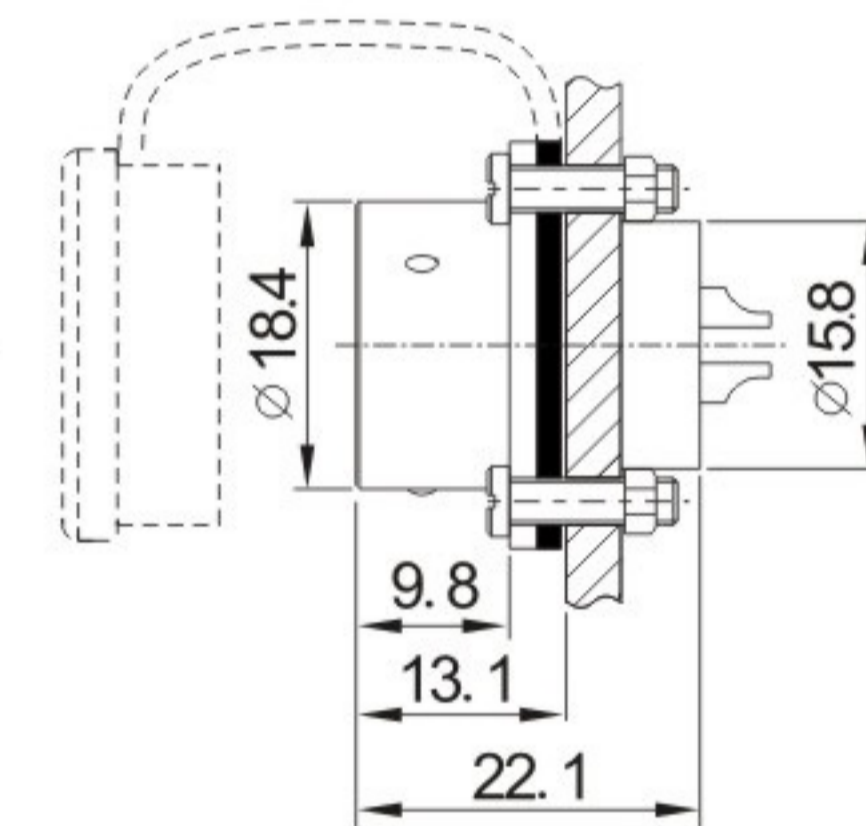
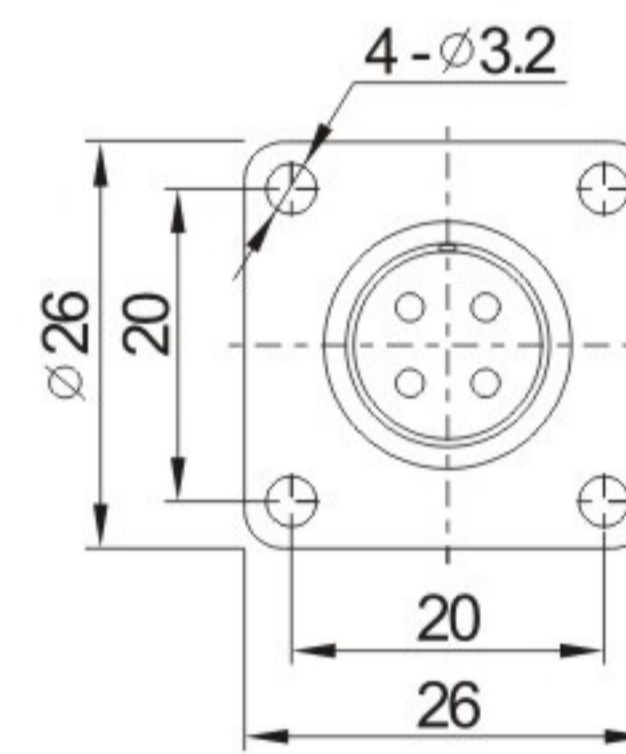


SF1612 / P ___ **SF1612 / S** ___

1: solder, 3: crimp
Number of contact



Square flange
Mate with SF1610



SF1613 / P ___ **SF1613 / S** ___

Solder contact spec

★ Crimp contact spec see page 77-80

Number of contact	2	3	4	5	7	9	10
Male contact face view							
Rated current (A)	10	10	5	5	5	5	5
Contact diameter (mm)	1.5	1.5	1	1	1	1	1
Rated voltage (AC.V)	500	500	500	500	400	400	400
Test voltage(AC.V) 1 min	1500	1500	1500	1500	1200	1200	1200
Contact resistance (mΩ)	2.5	2.5	5	5	5	5	5
Wire size (mm ² / AWG)	≤2/14	≤2/14	≤0.785/18	≤0.785/18	≤0.785/18	≤0.785/18	≤0.785/18