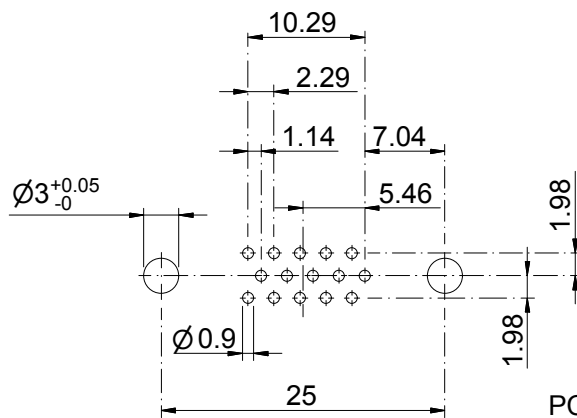
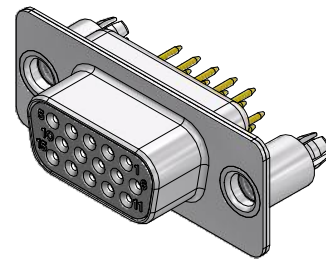
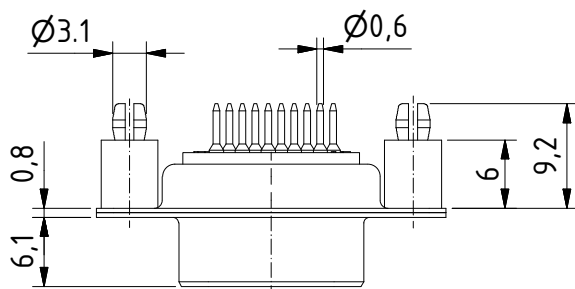
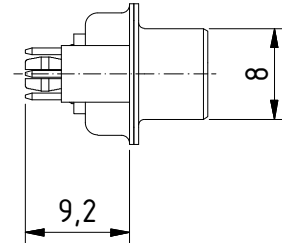
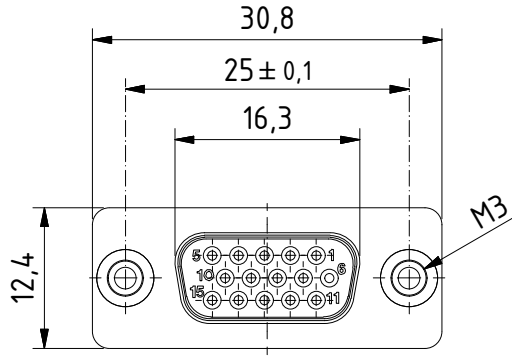


RoHS compliant



PCB Layout
tolerances +/-0.1

General tolerances (Deltron standard)	
size in mm	
> 0.5	±0.1
up to 3	±0.2
up to 6	±0.2
up to 30	±0.2
up to 60	±0.2
up to 120	±0.3
> 30	±0.3
tolerances	

MATERIALS

- Insulator: Thermoplastic UL 94-V-0 white
- Contact: Copper alloy
- Contact finish: Quality class 2
- Shell: steel tin plated

CHARAKTERISTICS

- Working voltage: 60V
- Current rating: 3A
- Contact resistance: max. 10mΩ - DIN41652
- Insulation resistance: >5GΩ
- Temperature range: -55° to +125°C

modification	Rev. a) 13.12.2009 mr	Rev.	Rev.	DE013599		
	Rev.	Rev.	Rev.	part no.		
HD-D15SY/2M86M3	1.5:1 scale	drawn	17.03.2009	mr		
		checked				
		approved				
 Industrie Neuhof 8c CH-3422 Kirchberg				K060427 a drawing no.		